

Melanie Morreau, Taylor Walters

IA 418-01

Instructor Christine Burch

Spring 2025

Bringing the Outside In.

Preliminary Research Findings

The Cordwainer Delivers Nature-Driven Design to Memory Care Residents in Norwell, Massachusetts

- Biophilic Elements
- Strong use of natural daylight
- “Racetrack”/ promenade format of hallways
- Use of Site and Landscape
- Mid-Century Aesthetics

Help prevent dementia
by engaging in
activities that
stimulate the brain and
by taking care of your
physical health.



Mother of Perpetual Help Memory Care Addition, St Louis

- Common spaces grouped together
- Large windows, accessible courtyard, porches
- Color-coded doors and shadow boxes
- Enriching communal garden



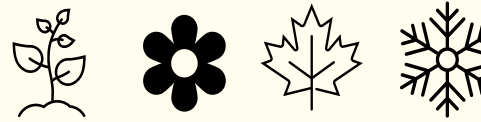
Dementia-
more than just
forgetfulness:

- Challenges with problem-solving skills
- Trouble with understanding time
- Social withdrawal from work or other activities
- Sudden mood and personality changes
- Challenges with place



Concept and Schematics

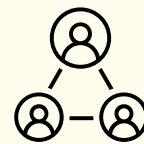
Landscape – the Weber Neighborhood highlights its local landscape by mirroring its sensory experience through the use of colors, textures, and incorporation of natural elements.



Home – this community aims to make residents and guests feel more at home through personal touches throughout the space. Things like adjustable lighting and reading lamps, personal pictures on display, and individualized furniture all add to the feeling of being at home.



Encouragement – residents will be met with a plethora of invigorating sensory experiences that enrich their minds and social lives. These interactive elements help to bring in a sense of the outside world, and connect residents with the beings around them to stimulate their minds.

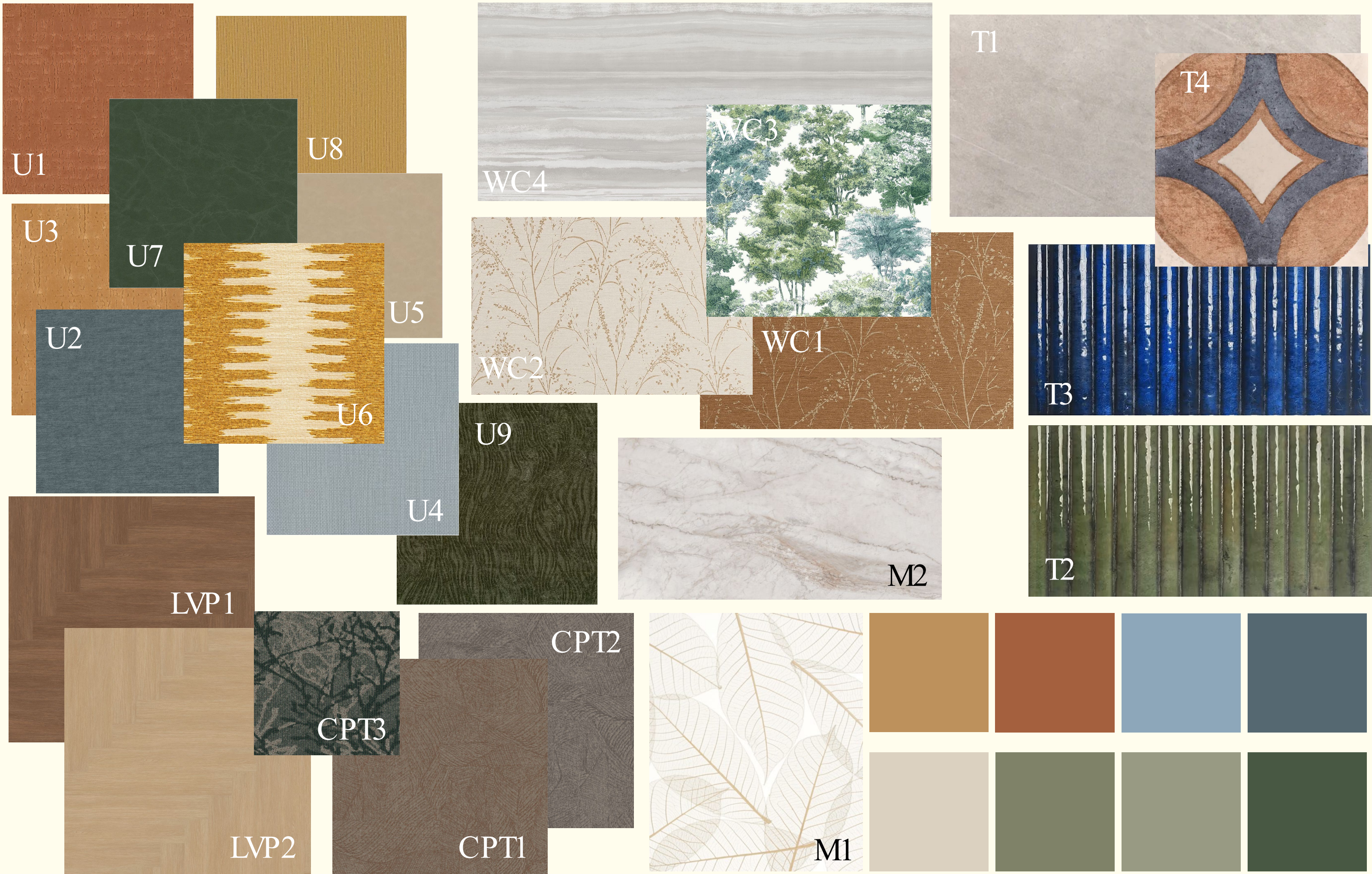


Bringing the Outside In.

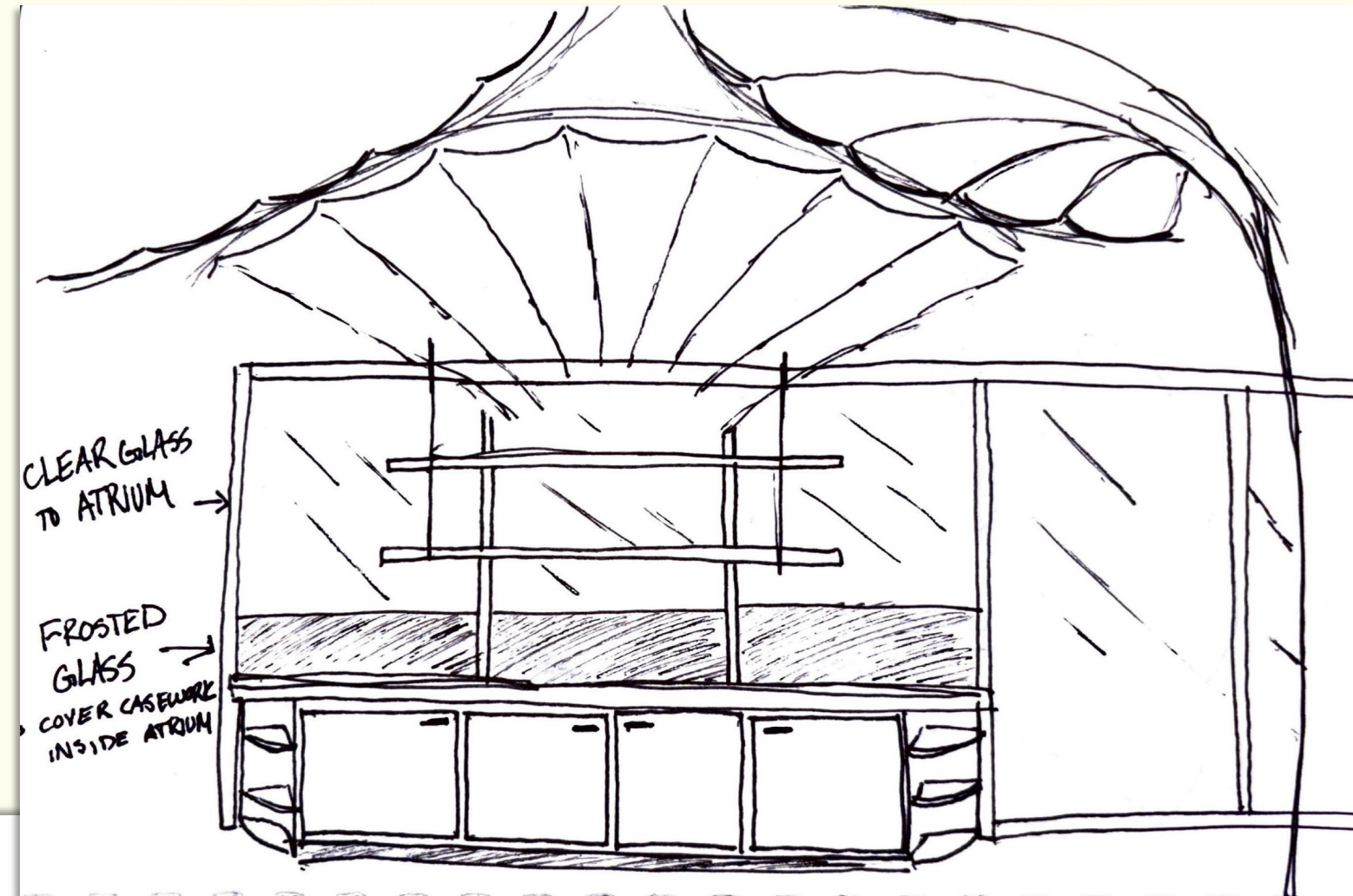
Alzheimer's disease, the most common form of Dementia, impacts more retirement home residents than any other condition. Alzheimer's requires additional, thoughtful care accompanied by an empathetic living space – one that adapts to memory issues, strong emotions, and degenerative loss of some abilities and sensory experiences.

*The Weber Neighborhood is designed to feel like everyone's second home. The space emphasizes the connection to **local flora and fauna** that is so important to Wisconsin. The Neighborhood highlights a sense of tranquility and peace that one feels when surrounded by nature. The design integrates live plant spaces and natural color palette to create a **biophilic connection**, as well as **creative wayfinding techniques** for the Weber residents and guests.*





Ideation and Planning



- * grand staircase for visitors
 - enclosed w/ doors
 - reception + functional spaces?

Sentry
Neoclassical

Garden/
entrance?

Church
Steeple

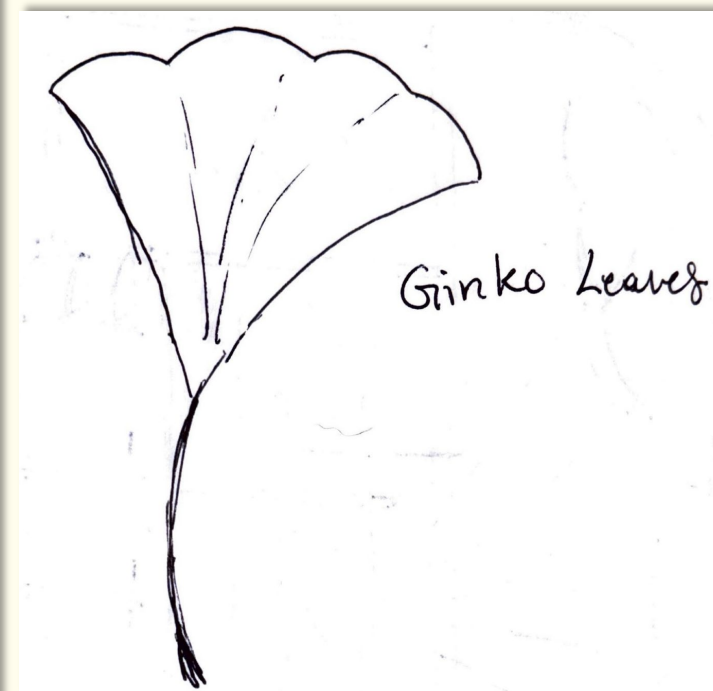
- Public Entrance(s)
- Staff Entrance
- Drop-off/Loading
- Carport?

↑ N

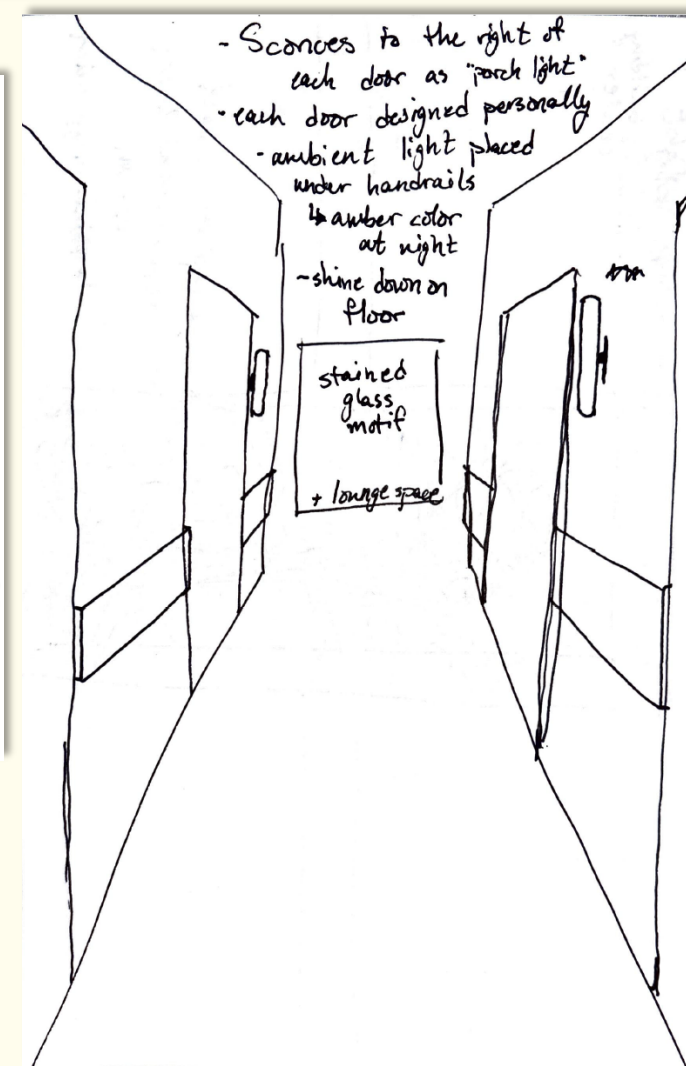
PLAN N.

River front

temple



Ginkgo Leaves

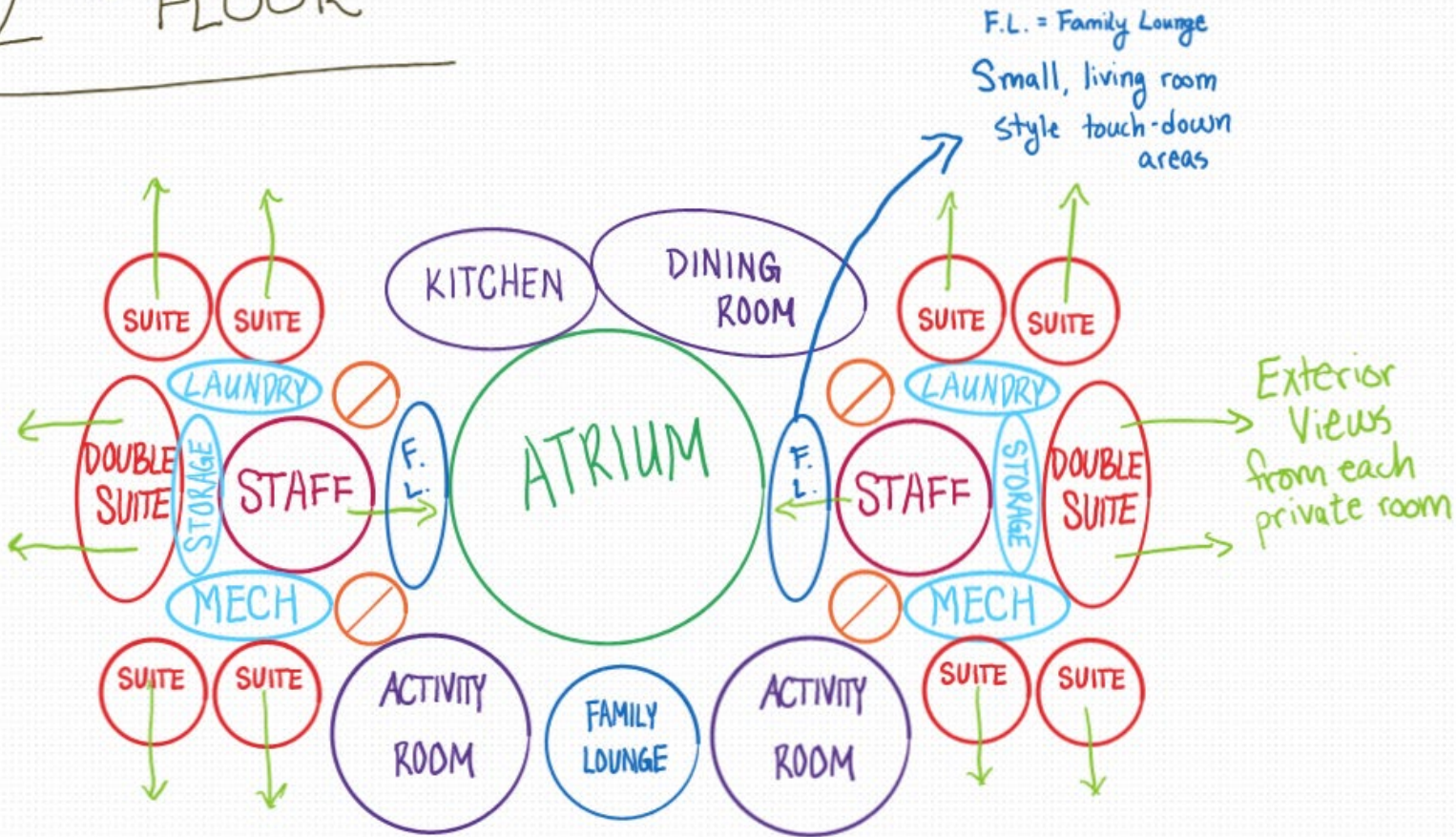


- Sconces to the right of each door as "torch light"
- each door designed personally
- ambient light placed under handrails
- ↳ amber color at night
- shine down on floor

stained glass motif
+ lounge space

Ideation and Planning – Block Plans

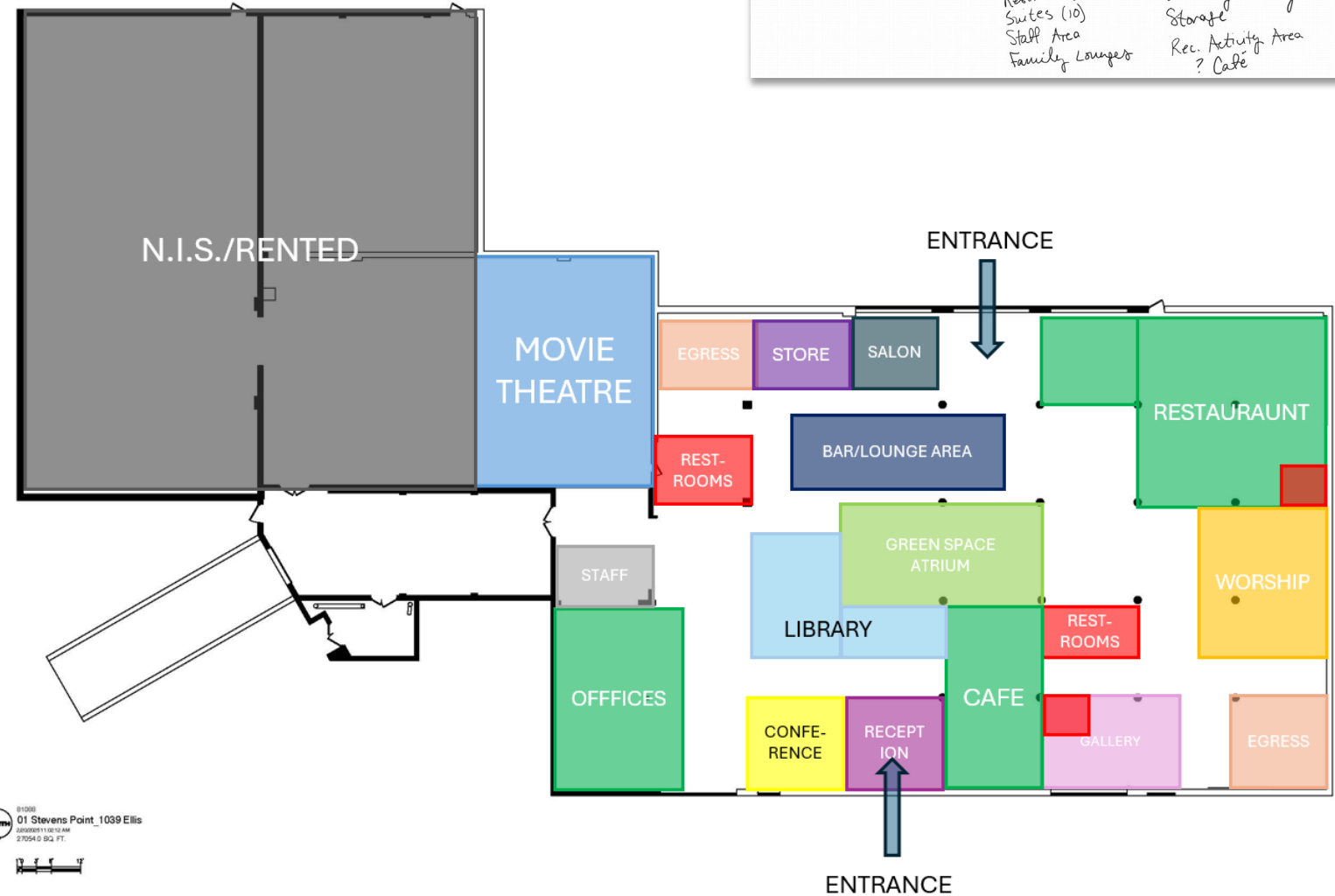
2ND FLOOR



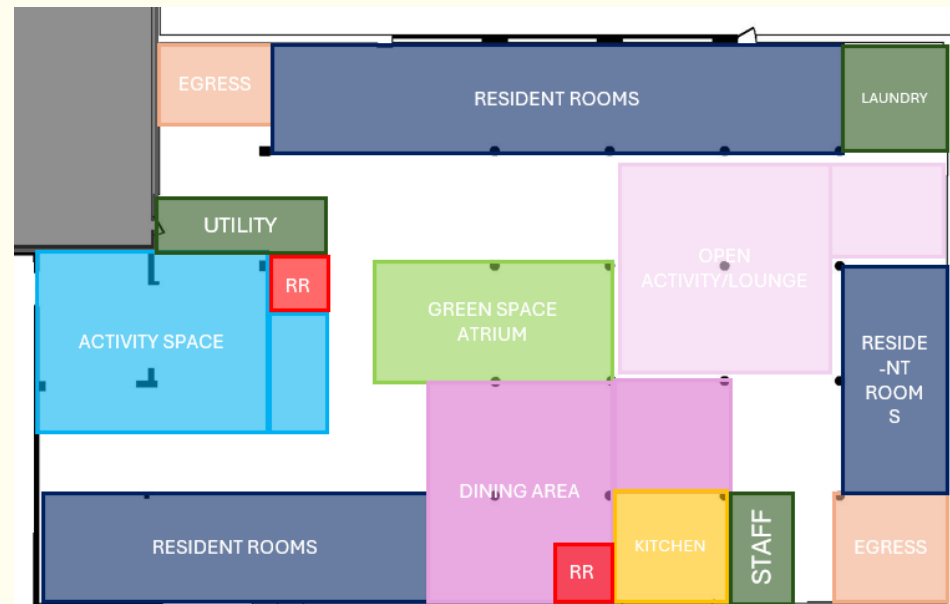
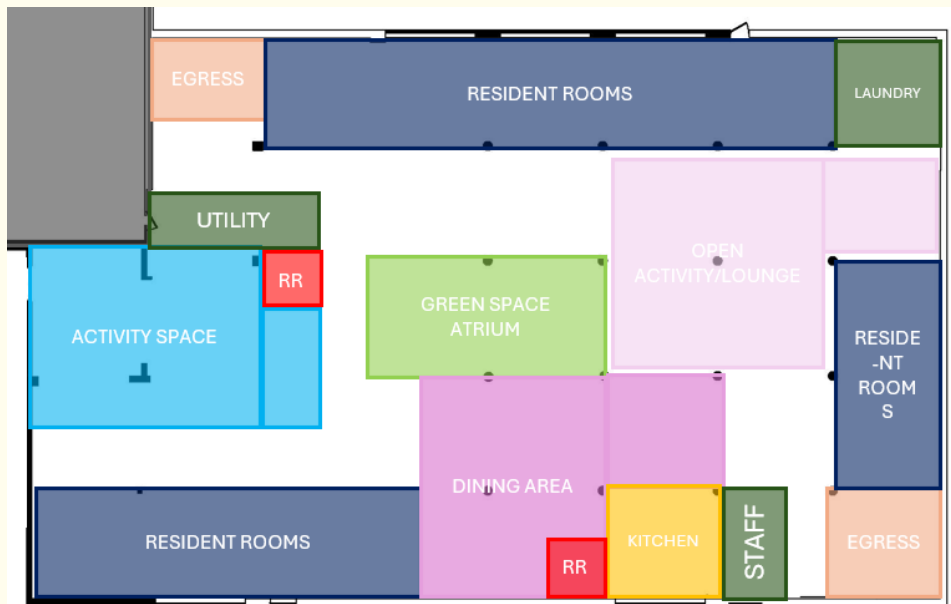
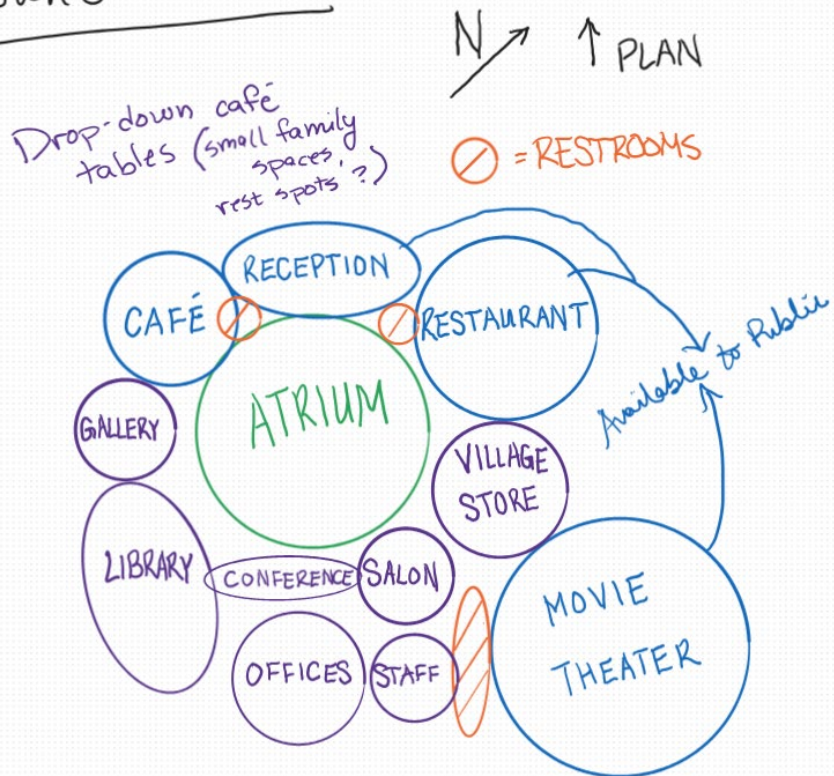
	500-11	1000-11	1500-11	2000-11	2500-11	3000-11	3500-11	4000-11	4500-11	5000-11	5500-11	6000-11	6500-11	7000-11	7500-11	8000-11	8500-11	9000-11	9500-11	10000-11
Entrance/Lobby																				
Reception/Office																				
Restroom																				
Salon																				
Village Store																				
Movie Theater																				
Gallery																				
Restroom																				
Family Lounge Space																				
Offices																				
Restaurant																				
Staff Area																				

Floor 1: Village	Floor 2: Residential
Entrance/Lobby	Restrooms
Salon	Suites (10) → 5 + 5?
Village Store	→ 4 wings total?
Movie Theater	Staff Area
Gallery	Family Lounge
Restroom	Family Lounge
Family Lounge Space	Laundry/Utility
Offices	Storage
Restaurant	Kitchen
Staff Area	Dining

Floor 3: Residential
Restrooms
Suites (10)
Staff Area
Family Lounge
Laundry/Utility
Storage
Rec. Activity Area
? Cafe



Ground Floor

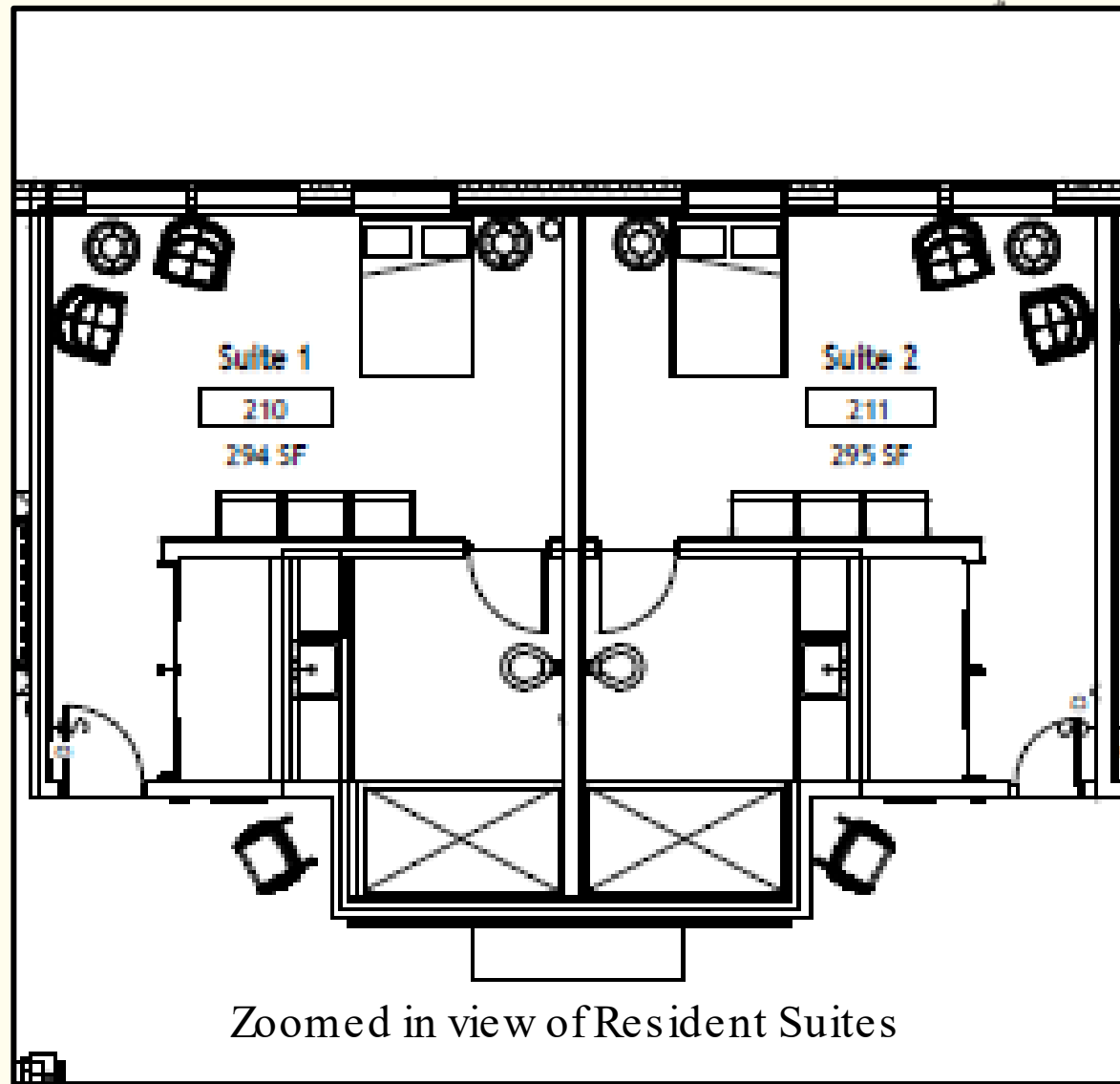


Rendered Floor Plan – First Floor

1. Reception
2. Café
3. Art Gallery
4. Conference Room
5. Offices
6. Public Restrooms (3)
7. West Open Lounge Space
8. Restaurant
9. Movie Theater
10. Village Store
11. Bar
12. Salon
13. Private Worship Room
14. Worship Space
15. Library
16. Atrium
17. Rentable Units
18. Storage



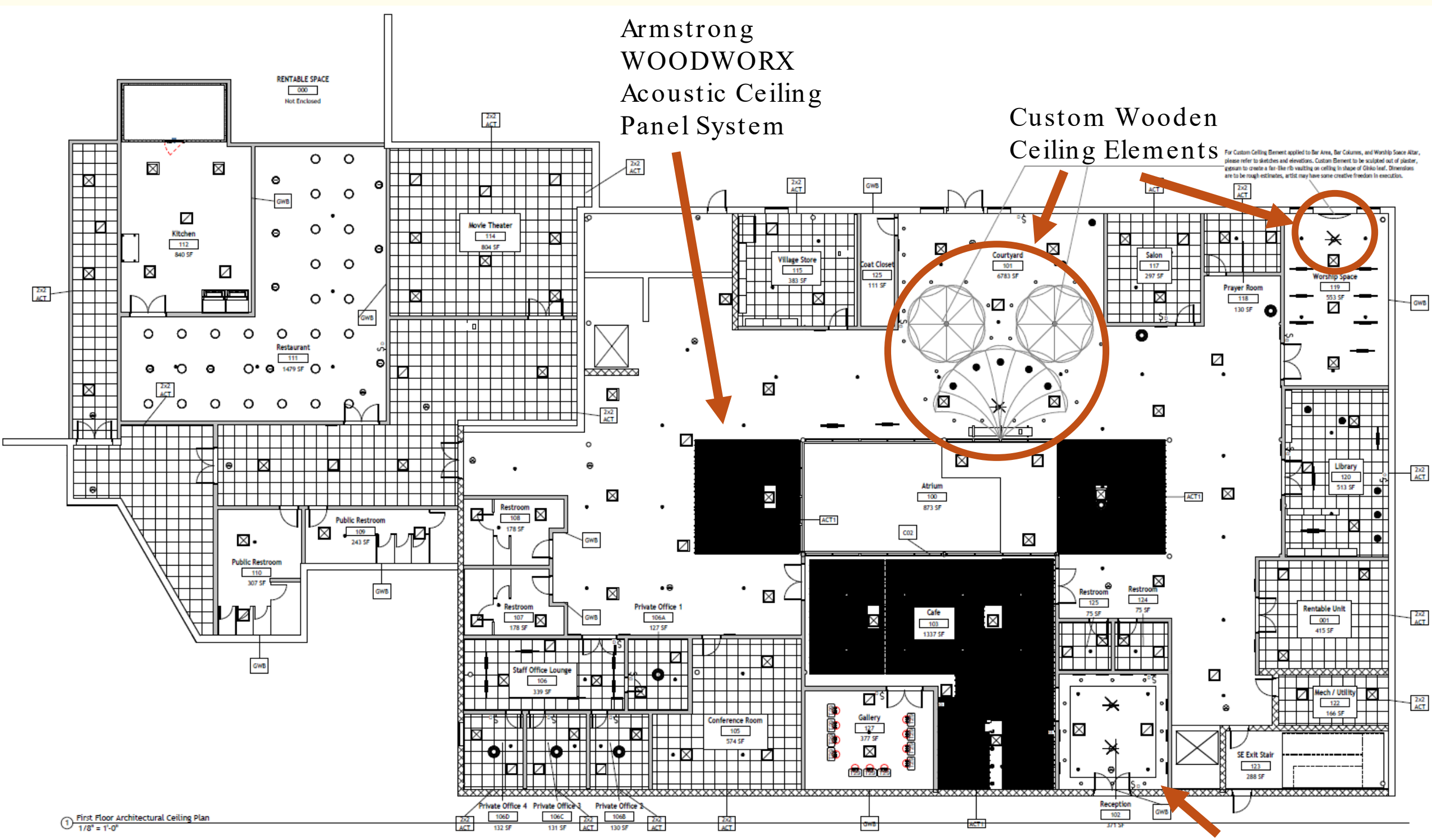
Rendered Floor Plan – Second and Third Floors



1. Mural Lounge
2. Dining Rom
3. Kitchen
4. Resident Suites
5. Staff Open Desk Area
6. Medical Storage
7. Utility/ Equipment
8. TV Lounge
9. Open Family Lounge
10. Atrium Balcony
11. Art Studio/ Exercise Room

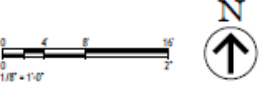


Reflected Ceiling Plans

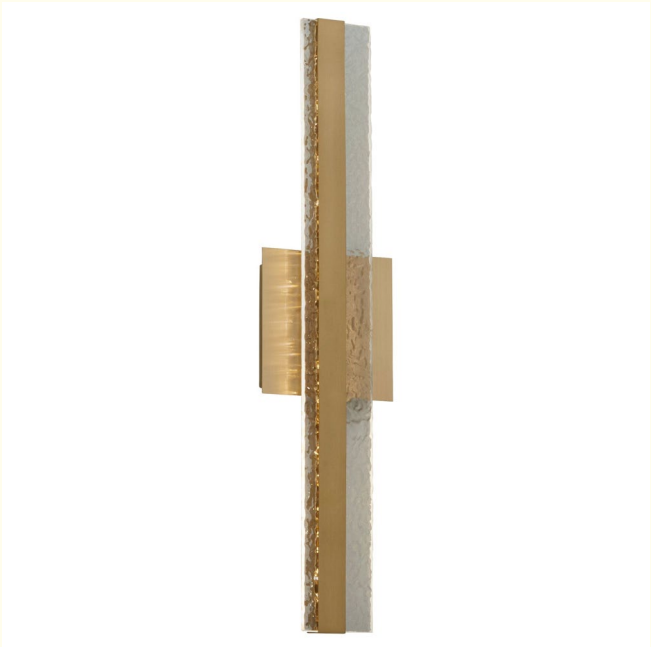


CEILING LEGEND

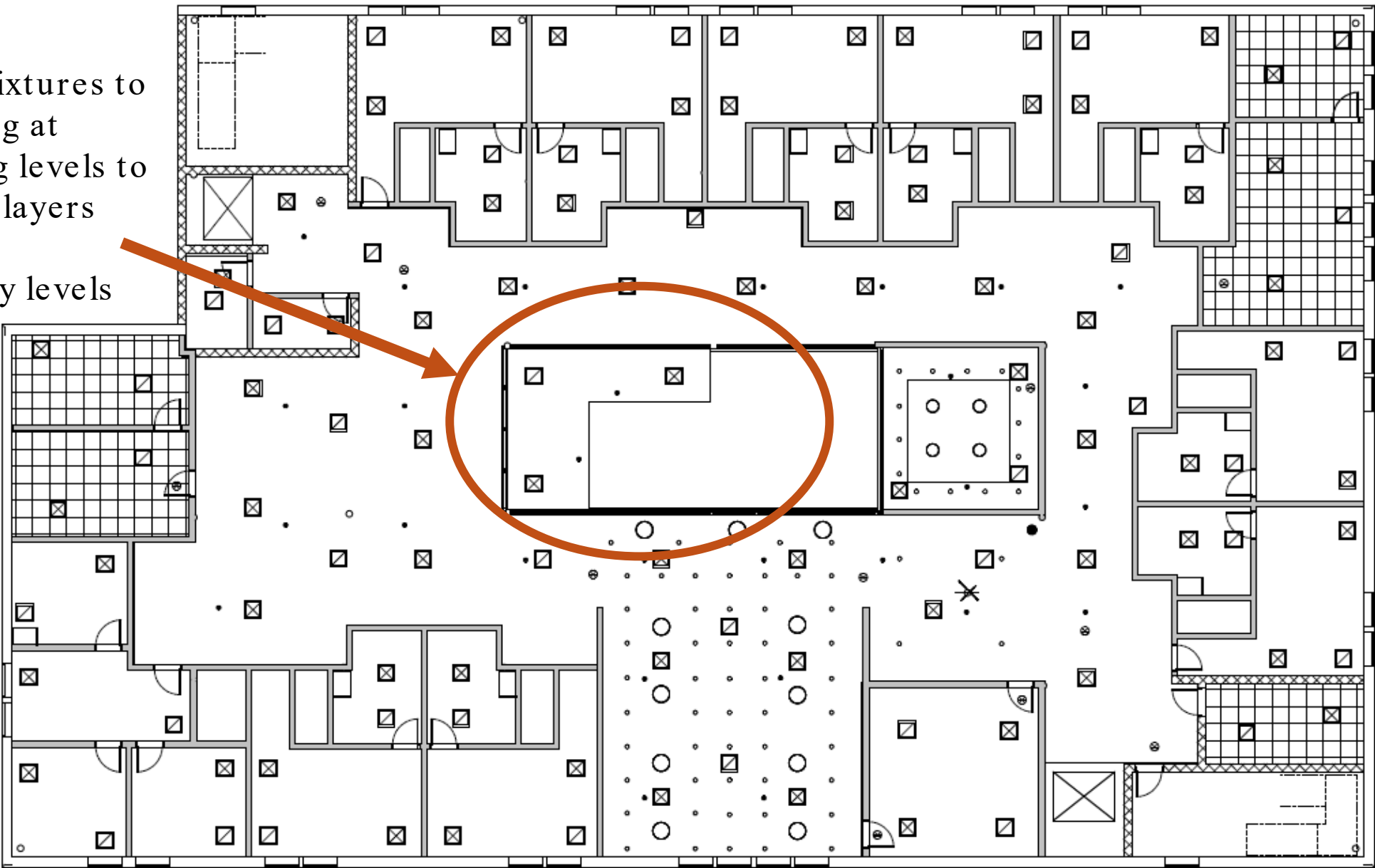
L1	Eureka Kizis Pendant - 7'-6" A.F.F. TYP	L4	Juno Tracklights	L7	Oxygen Axiom Pendant - Fixed A.F.F. height	L10	Eureka Ollo Pendant - 7'-6" A.F.F. TYP	HVAC Return Vent	Emergency Exit Sign
L2	LightArt Contour Roundover Pendant - 7'-0" A.F.F. TYP	L5	Oxygen Lighting Lucci Pendant - 6'-0" A.F.F. TYP	L8	Oxygen Palillos Pendant - 7'-6" A.F.F. TYP	L11	Oxygen Lighting Decca Pendant - 7'-6" A.F.F. TYP	HVAC Supply Vent	
L3	LightArt Cylinder Pendant - 6'-0" A.F.F. TYP	L6	Lightolier Surface Mount Downlight	L9	Antares Wall Sconce - 4'-6" A.F.F. TYP	L12	Onplana Surface Mounted Downlight	Sprinkler	







Reflected Ceiling Plans



Light fixtures to be hung at varying levels to create layers among balcony levels



1 Second Floor Architectural Ceiling Plan
1/8" = 1'-0"

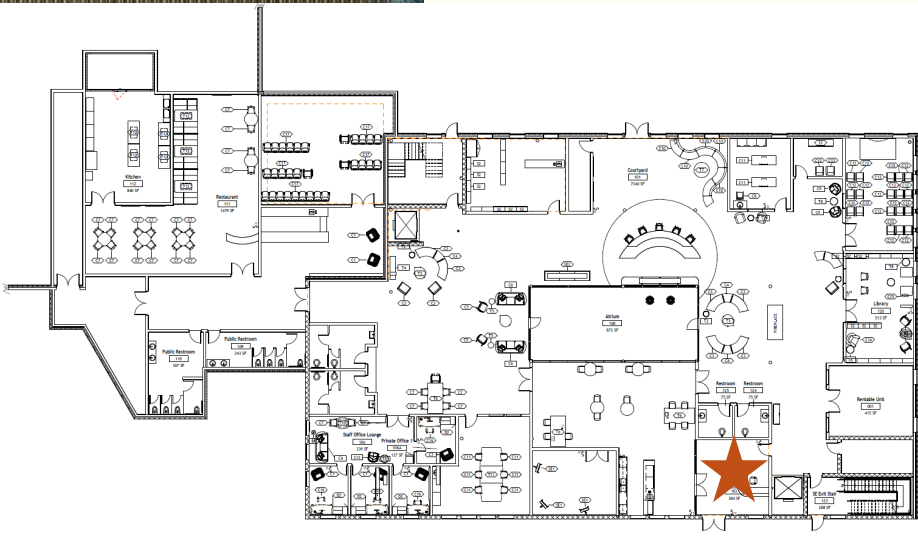
CEILING LEGEND					
L1	Eureka Kizis Pendant - 7'-6" A.F.F. TYP	L4	Juno Tracklights	L7	Oxygen Axiom Pendant - Fixed A.F.F. height
L2	LightArt Contour Roundover Pendant - 7'-0" A.F.F. TYP	L5	Oxygen Lighting Lucci Pendant - 6'-0" A.F.F. TYP	L8	Oxygen Palillos Pendant - 7'-6" A.F.F. TYP
L3	LightArt Cylinder Pendant - 6'-0" A.F.F. TYP	L6	Lightolier Surface Mount Downlight	L9	Antares Wall Sconce - 4'-6" A.F.F. TYP
L10	Eureka Ollo Pendant - 7'-6" A.F.F. TYP	L11	Oxygen Lighting Decca Pendant - 7'-6" A.F.F. TYP	L12	Onplana Surface Mounted Downlight
					HVAC Return Vent
					HVAC Supply Vent
					Sprinkler
					Emergency Exit Sign

A Walk Through the Space...

Reception Space,
connected to Cafe



- Sense of security and safety with check-in system
- Blue and Green wallpaper to reflect color palette, local nature

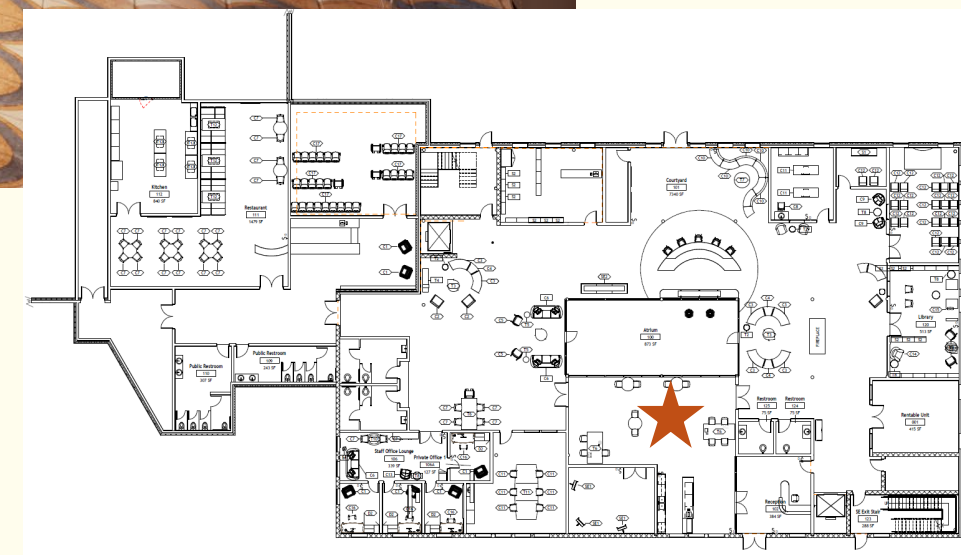


A Walk Through the Space...

Café open to the public,
Adjacent to reception



- Place to connect with neighbors
- Showcases local talent in the gallery
- Atrium view

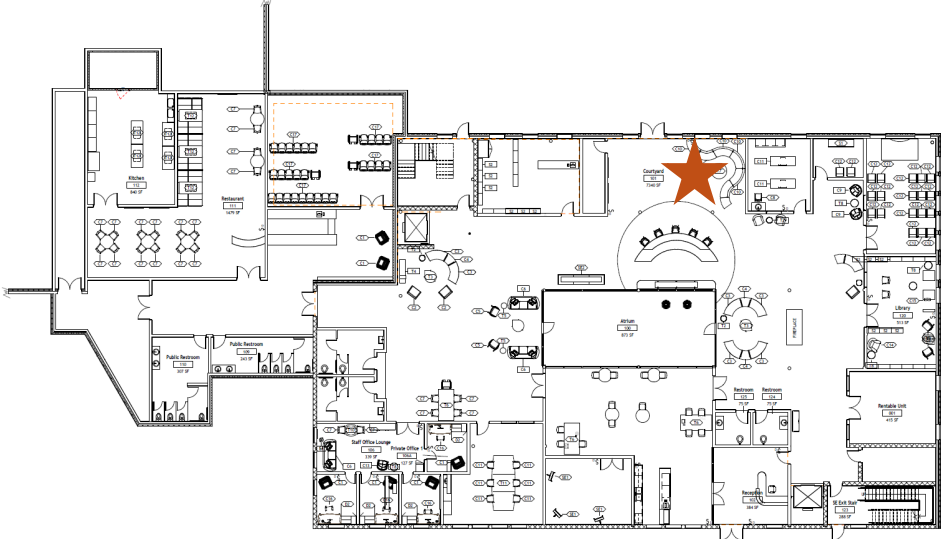


A Walk Through the Space...

1st Floor Lounge Bar,
attached to courtyard

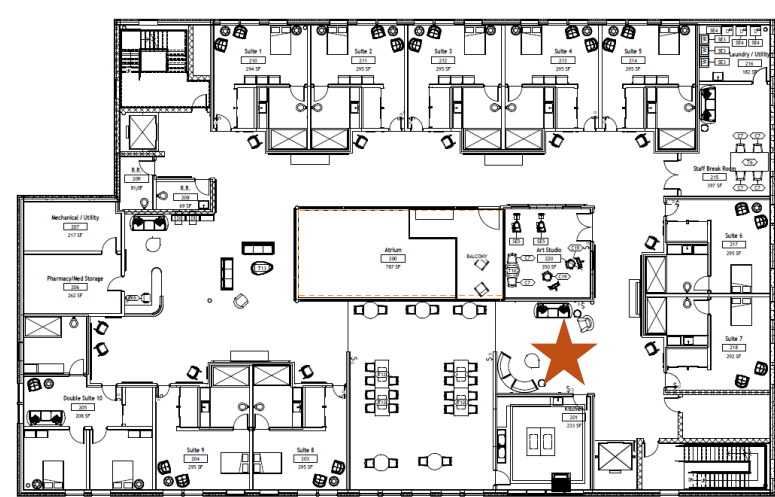


- A place to connect
- Provides stronger sense of normalcy
- Great for parties and dances!



A Walk Through the Space...

Family Lounge with Mural,
2nd floor off of elevators

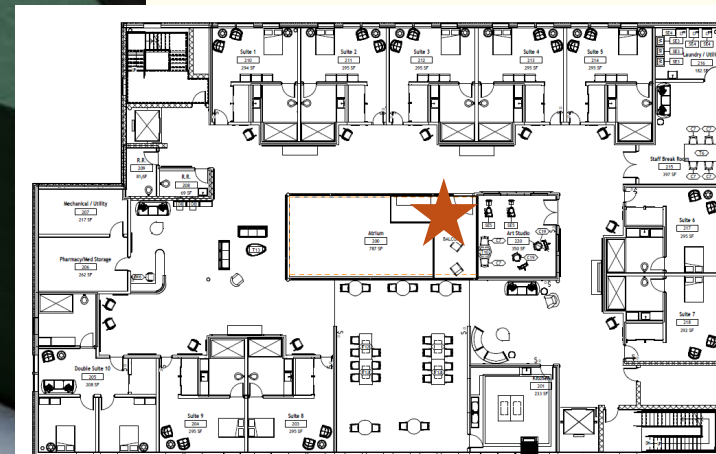


A Walk Through the Space...

Atrium View from
2nd Floor Balcony

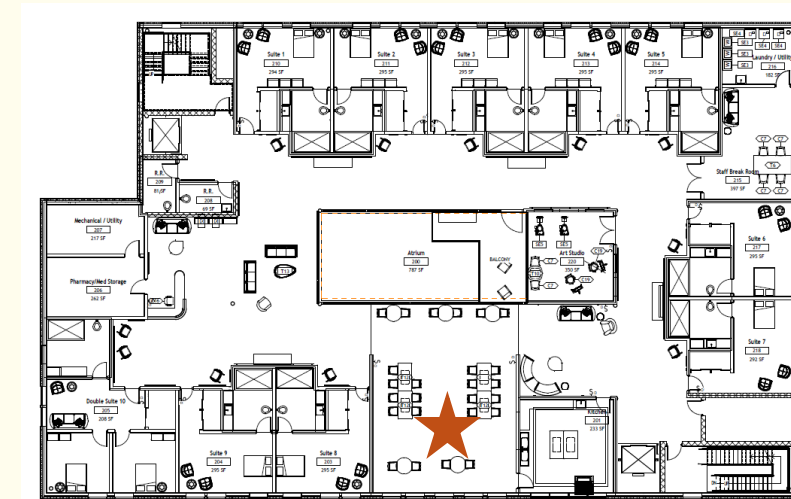


- Interconnection of floors through the balconies
- Visual connection to other public areas
- Acoustic privacy
- A close place for personal gardening



A Walk Through the Space...

Resident Dining Rooms,
2nd and 3rd floors



- Window into kitchen for resident ease and comfort
- Wayfinding techniques through color contrasts
- Large windows for ample daylight,
better lighting for food
- Large tables to encourage community



A Walk Through the Space...

Resident Suite “Front Porch” and
Lounge with Mural

- Staff has access to supply closets behind desk
- Staff has open view of “racetrack”, dining room, lounges, etc.



- Personalization with furniture, door decoration, name tags on corkboards
- Spot for visitors outside of the personal room





EST. 2025

**WEBER
NEIGHBORHOOD**

Memory Community

- 1039 ELLIS ST -

Bringing the Outside In.

Landscape

Encouragement

Home

Melanie Morreau and Taylor Walters